



Our Mission:

"We Provide the Best Personalized Financial Services"

KGEFCU NEWS

www.kgefcu.org

"Together, We Make It Happen"

June 2011

This Issue

- ATM CO-OP Network
- KGEFCU Sponsors "Business After Hours"
- Board of Directors
- Read & Win
- Ohana Happenings Welcomes Myrvie Buster
- Peace of Mind
- You Did It...Great Job!
- CEO's Corner
- Current Rates
- Current Growth Chart
- Your Best Slippa
- Going to the Fair
- Member Survey
- Current SEG List

Holiday Schedule Closed

- Independence Day**
Monday, July 4th
- Admissions Day**
Friday, August 19th
- Labor Day**
Monday, September 5th

Kaua'i Government Employees FCU

2976 Ewalu Street/PO Box 711
Lihue, Kaua'i, HI 96766
Telephone: 808-245-2463
www.kgefcu.org

Telephone Banking

800-330-8115

Lost or Stolen Debit Cards

800-472-3272

Business Hours

- Monday - Wednesday**
7:45a.m. - 4:30 p.m.
- Thursday**
8:30a.m. - 4:30 p.m.
- Friday**
8:30a.m. - 6:00 p.m.
- Drive-Thru Hours:**
Monday - Thursday
10:00a.m. - 3:00p.m.
- Friday**
10:00a.m. - 5:00p.m.

The CO-OP Is Here! The CO-OP Is Here!



On June 20, 2011, KGEFCU launched its' ATM CO-OP Network. What this means is, our members now have access to over 28,000 surcharge-free ATMs including 9,000 deposit-taking ATMs locations throughout the U.S. and Canada. Darrell Dabin.

CO-OP Network gives Kaua'i Government Employees FCU the power to be everywhere and is the most expansive credit union only ATM network in the nation. It has links to virtually every national and regional system and is still growing, spanning all 50 states and 10 countries. For more information and to find a location nearest you, go to our website at www.kgefcu.org.



Proudly Serving Kauai's County, State and Federal Employees and Employees of Select Employer Groups (SEG's) and their immediate families.

KGEFCU Sponsors Chamber "Business After Hours"

The Kaua'i Chamber of Commerce and Kaua'i Government Employees FCU formed a partnership to support our neighboring businesses by inviting them to participate in the very first "Summer 2011 Block Party". Times are tough and we know our neighbors want more business and the added value of free and leveraged marketing. That's why KGEFCU partnered with the Chambers' already successful, "Business After Hours" networking event. Our hope is to increase business by sharing the benefits. KGEFCU and twelve neighboring businesses on the block, hosted over 100 Chamber members and guests to a home town garage barbecue by Richie's Bar & Grill, music by Kustom Block Party Cont...

Board of Directors

- Ken VillabrillePresident*
- Eugene Jimenez.....Vice President*
- Dennis HigashiSecretary*
- Byron WatanabeTreasurer*
- Anita AquinoMembership*

Read & Win!*

Read this Newsletter
See Your Name
You WIN!
\$25
Call: 245-2463

*Names associated with articles are excluded

Ohana Happenings: *KGEFCU Welcomes Myrvie Buster...*



"Peace of Mind"

KGEFCU would like to welcome Member Services Representative Myrvie Buster. She was born in Iligan City, Philippines and grew up in Zamboanga City. Myrvie graduated from Western Mindanao State University with a Bachelor of Arts degree in Mass Communications and a Major in Broadcasting. In the Philippines, Myrvie was employed as a Voice Coach for young children at the Zamboanga Music and Arts Learning Center. She then worked as a Call Center Agent for Cyber City Teleservices Inc. and a Clerk for the Department of Works and Highways. Here on Kaua'i, in addition to KGEFCU, Myrvie works on-call at Macy's. In Myrvie spare time, she likes to watch movies, take long drives, go site seeing and to the beach. "I feel so blessed working at KGEFCU. I am so grateful that I have been given the chance to work here. It is a very good working environment with an enthusiastic team. For me, "Together, We Make It Happen" means that we can all be successful if we work as a team and not as an individual."

"I would like to take this time to praise the employees at Kaua'i Government Employees FCU. Whitney Miguel is always willing to go the extra mile for the members. I will forever remember her willingness to help me during my time of need. It takes a very special person to dedicate every spare minute to lend a helping hand. Lynn Constantino and Tom Vallatini are remarkable loan officers. With the help of Whitney, I was directed to consult with both of them for help and information. They provided me knowledge that has helped me understand how credit works. Just recently I was very ill and unable to work for a week. I was unable to make my car payment. To my relief, they expressed concern and sensitivity that made applying for a loan a lot easier. I just want everyone to know that I am appreciative of what the staff has done. I now have peace of mind knowing I am a member of such an outstanding credit union and I'm sure other members feel the same! Thank you." *Whitney Yadao*

Block Party Continued...

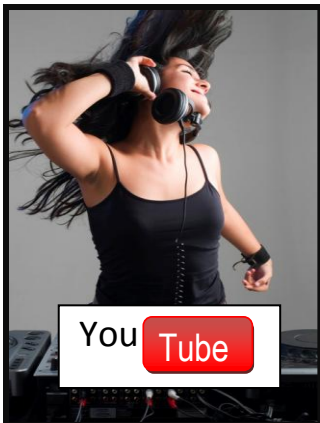
Sounds Kaua'i DJ and generous door prizes provided by your hosts. Aloha Furniture, Baby Blutique, Back Street Billiards, Buddha Boutique, IT Kaua'i, Kaua'i Toyota, Lifestyles Boutique, Noguchi & Associates, Photo Spectrum and H. Hawaii Media who provided 60 second radio commercials to all the participating business "live" on Rooster Country 99.9FM. "Together we really did make it happen."

You Did It... Great Job!



Congratulations!

Kaua'i Government Employees FCU would like to thank you for participating in our 22nd Annual High School Scholarship Program. These exceptional students have been selected to receive one of four \$1,000 scholarships. Miss Rachel Coyaso, Miss Destiny Lynn Martin-Lazaro, Miss Ira Lapitan and Mr. Mason Chock Jr. On behalf of the management, staff and volunteers, we would like to congratulate you on your achievements and wish you great success!



STUDENT JINGLE CONTEST

Are you a student who attends a public school on Kaua'i? Get your group together and enter KGEFCU's "Together, We Make It Happen" Jingle Contest. The winning group will receive \$500 for your school and will be featured in credit union radio commercials. Place your video on YouTube and impress your friends.



Supervisory Committee

Kaua'i Government Employees FCU
 PO Box 3964 Lihue, HI 96766
 E-mail: auditors@kgefco.org
 Telephone: 808-855-2949
 Melvin Ota – Chairperson
 Stu Burley – Committee Member
 David Longmore – Committee Member



CEO's Corner..

Being home recovering from back surgery these past weeks has given me pause to reflect on what most inspires me, and members' trust tops the list. We must not only remain a safe credit union but deliver exemplary service. I'm inspired by the best staff in the universe and by our wide array of competitive products. Kendall L. Lopez. In today's world we would not be able to do this without knowledgeable people supported by the best technology.

June is the month the credit union sends the "Privacy Policy" to our members. Underlying the policy must be careful due diligence. We take nothing more seriously than our members' trust. Critical to the due diligence process is vetting core processors. We want to find the best track record and then constantly review their testing. Selection of payment processors is critical as well since financial institutions are the most targeted industry for phishing. This is according to the Anti-Phishing Working Group (APWG). It is startling to learn that payment processing services is the 37.9% most targeted industry with financial services at 33.1%.¹

"We are always here for you."

Corinne King

Kaua'i Government Employees FCU
CEO/General Manager

"Together, We Make It Happen"

¹A Phishing Expedition, CU Magazine-April 2011, pp.38, APWG.

Current Rates...

Kaua'i Government Employees FCU



SHARES.....	APY (Annual Percentage Yield)
Regular Shares.....	0.250% - 1.004%
Christmas Club Account	0.250%
Money Market Account	0.625% - 1.510%
Individual Retirement Account	- 1.257%
Traditional & Roth IRA Certificate.....	1.256% - 2.778%
Share Certificate	0.501% - 2.778%
Share Draft.....	0.250%

Contact your credit union for further information on applicable fees and terms

LOANS..... APR (Annual Percentage Rate)

Personal Loans

1 year.....	5.75% - 11.75%
2 year.....	6.25% - 12.25%
3 year.....	6.75% - 12.75%
4 year.....	7.25% - 13.25%
5 year.....	7.75% - 13.75%
6 year.....	8.50% - 14.50%

Share Secured

1 - 5 years.....	5.00%
6 - 7 years.....	5.50%
8 - 10 years.....	6.00%
Share Draft Overdraft Line of Credit	10.00% - 16.00%

New & Used Cars

1 - 4 years, 100% financing	4.25% - 8.25%
5 years, 100% financing	4.75% - 8.75%
6 years, 100% financing (\$20,000 and over)	5.25% - 9.25%
7 years, 100% financing (\$30,000 and over)	5.75% - 9.75%
Mixed Collateral (Signature & Shares) up to 5 years	4.75% - 8.75%
Mortgage Loans - 15 yr Balloon/30 yr Amort; Fixed up to \$650,000	5.00%
Mortgage Loans - 20-year fixed, up to \$650,000 Owner Occupant.....	5.25%
Home Equity LOC - 15-year Variable	
80% of Equity Value or \$650,000 maximum (whichever is less) as low as.....	3.50%
Home Equity LOC - 20-year Variable	
75% of Equity Value or \$650,000 maximum (whichever is less) as low as	3.75%
Student Loans up to \$8,000 per year maximum four years.	
Repayment terms up to ten years when school ends.	6.25%

Share and Loan Rates and the Annual Percentage Rates are subject to change without notice. We do business in accordance with the Federal Fair Housing Law and the Equal Credit Opportunity Act.

Dividend Rates effective March 1, 2011.

KGEFCU's Growth Chart

	<u>May 2011</u>	<u>May 2010</u>
Assets	\$82,650,318	\$71,791,012
Loans	45,680,473	28,523,221
Investments	29,611,903	36,109,056
Shares	74,626,433	64,370,055
Members	5,710	5,551

*Dividends on Regular Shares Tiered
From 0.250% - 1.004% APY as of
March 1, 2011.*

facebook
Become a Fan

**Homeowners
Only!**

**It's Easy Being
Green @ KGEFCU**

**Loans May Be Used
For Any
Environmentally
Friendly Products.**

**Apply Online Today!
www.kgefcu.org**



Put Your Best Slippa Forward



KGEFCU offered Aid and joined the 33rd Annual HHLA Visitor Industry Charity Walk in May. Cyndi Ayonon, Marketing Committee Chair and Curt Allison, CU Member, offer water, juice, and granola bars to the over 1,300 walkers. Staff members, Vanessa Bertucci and Joyce Arellano, raised money and joined the 2.9 mile trudge. Money raised helps over 40 Non-profit organizations on Kaua'i. "Put Your Best Slippa Forward" was the theme and that we did!

Don't You Just Love Going to the Fair?

It's that time of year again and the Kaua'i Farm Bureau Fair wouldn't be the same without a little BINGO! Each year, KGEFCU sponsors Opening Night, \$500 Blackout Bingo.



That's not all! Members will be able to get their FREE bingo cards, FREE Senior Passes and FREE Keiki Passes at the credit union in mid August, on a first come first serve basis. Members are also welcome to join us for the 9th Annual Keiki

Talent Competition. The credit union offers Cash awards to the 1st, 2nd and 3rd place winners in the two age categories, 6-10 & 11-16. Enter your Keiki today and we'll see you at the Fair!

"Member Survey" Win a \$100 Bucks!

Are we living up to our Mission? *"We Provide the Best Personalized Financial Services"* By participating in our survey you will be eligible to win \$100 Cash! Weekly drawings will receive a shopping bag full of KGEFCU logo stuff. (\$25 value) Surveys can be found on the teller counters at the credit union. Herman Texeira

Select Employer Group (SEG) Program*

Offer credit union membership as an employee benefit to your employees. When you enroll in KGEFCU's Select Employer Group Program, your employees become eligible for membership. They'll have access to low interest loans, Savings and Checking Accounts, VISA Debit Card, Free Online Banking, Bill Payer, E-Statements, Telephone Banking, Direct Deposit and much more. **Enroll Now!** For more information on this program visit our website @ www.kgefco.org or Call 855-2942. "Together, We Make It Happen."

****Employees of these Select Employer Groups and their families are eligible for membership.***

Adolf's Auto Body
All Kaua'i Cleaning Co.
Aloha Furniture Warehouse
Aloha Island Properties
Avis Rent-a-Car
Banyan Harbor
Benzaken Investment Group
Brennecke's Beach Broiler
Brennecke's Beach Bungalow
Buddha Boutique LLC
C-Lure Fishing Charters, Inc.
Café Portofino
Care Safe, Inc.
Charlie's Custom Drapery & Upholstery
Coconut Coast Electric
Coy R. Rebmann, DDS, Inc.
Creative Therapy, Inc.
Dang Rentals
Esaki Surveying & Mapping, Inc.
Flowers Forever LLC
FM 97 Radio
Garden Island Flying Club LLC
Grande's Gems
Hale Kaua'i Ltd.
H. Hawaii Media
Hawaii Healthcare Professionals, Inc.
Hawaii Security Alarm Systems

Haz Marble & Tile
Honolulu Industrial Coating Co., Inc.
Hurst Group LLC
IT Kaua'i, Inc.
J.B. Cummings, Inc.
J.B. Tree Trimming & Landscaping
Jack Harter Helicopters
JJ's Broiler
JM Pacific Construction LLC
Kaua'i Air Conditioning & Refrig.
Kaua'i Athletic Club
Kaua'i Community College-Students
Kaua'i Food Bank, Inc.
Kaua'i Growers Exchange
Kaua'i Kilohana Partners
Kaua'i Office Equipment, Inc.
Kaua'i Optometric Center
Kaua'i Producers, Ltd.
Kaua'i Publishing Co.
Kaua'i Toyota
Kaua'i United Way
Kelepa Koa, Inc.
Kilohana Lighting, Inc.
King Auto Center
K & S Pumping
KONG Radio Group
Kuhio Auto Group

Lihue Pharmacy, Inc.
M & K Distributors, Inc.
M. Tanaka Store, Inc.
Maile Properties of Kaua'i
Midpac Auto Center
MK Services DBA
Mokihana Travel Services
Mr. Green Energy
No Ka Oi Property Mngt. & Wellness
North Shore Executive Services
Nukumoi Surf Company
Ohana Motors
Puakea Golf Course
Richie's Bar & Grill
R.W. Palama & Sons
Savage Shrimp
Speedie Lube of Hawaii, Inc.
S & S Business Machines, Inc.
Studio 203 Salon
Suzuki Kaua'i
Talk Story Bookstore
The Fence Company
The Hertz Corporation
The Professionals Unlimited
Toolmaster Hawaii, Unincorporated
Up-to-Date Cleaners Kaua'i, Inc.
Werner Construction, Inc.